



CosmoStar – Handle with Care

INDUSTRIAL APPARATUS

Global Leader Manufacturer of Quality Fluid Handling Equipment in Taiwan



For industry practitioners and experts in:

- Building and Construction Companies
- Metal Treatments
- Marine and Shipyard Buildings
- Furniture and Timber Works
- Railroads, Streets and Public Facilities
- Chemical Industry
- Fluid Handling Application

ISO 9001:2008
Certification



Ching-Yea MECHANICAL INDUSTRY

Fluid Handling Equipment Manufacturer
No.8, Alley 6, Lane 15, Sec. 2, Jiayuan Rd., Shulin District,
New Taipei City 238, TAIWAN
Tel: +886-2-2668-7799 Fax: +886-2-2668-8991
www.cosmo-star.net; cosmostar@chingyea.com

EXPERIENCE • QUALITY • CARE

CosmoStar- Handle with Care

Experience • Quality • Care

BUILDING AND CONSTRUCTION

CosmoStar airless sprayer series are used throughout the construction process from paint spraying, insulating and applying protective coating.

- **Steel Construction**

CosmoStar provides airless sprayers for spraying protective coatings e.g., anti corrosion applications and wall/floor water proofing.

- **Insulation and Plastering**

CosmoStar provides multi-component sprayers for polyurethane (PU) and foam insulation for roofs and walls.

- **Decorative Painting**

CosmoStar provides spray units for decorative painting for new constructions and renovations.

Applicable Materials:

Oil-based paint, water-based coatings, waterproof coatings, sound-insulation paint, heat preservation, fire-resistant coatings, anti-rust paint, cement mortar, adhesive layer, putty, etc.



Airless Sprayer

CosmoStar Airless Sprayers are designed for heavy duty applications. Huge pressure output makes it suitable for marine and shipyard painting application.

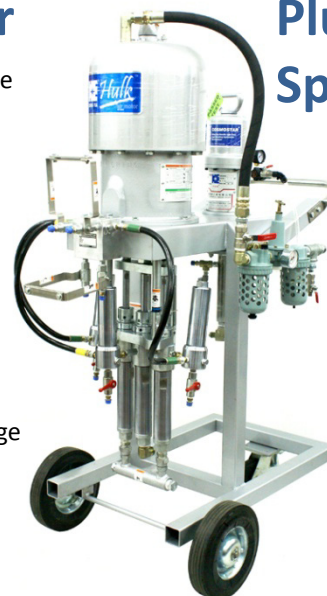
Features

- ✓ Higher pressure ratio for higher flows, superior atomization
- ✓ Wide spraying coverage
- ✓ High mobility



Plural-Component Sprayer and Pump

High volume mechanical proportioner that replaces the manual pre-mixing of plural component materials and reduces the cost of wasted paint and labor.





METAL TREATMENT

CosmoStar spray equipment is used to treat metal surfaces. **High Pressure Airless Sprayers** are the best to use when applying thick coating e.g., Primer, anti-corrosion, while **Diaphragm Pump Sprayers** are necessary to apply high quality finishing (painting).



High Pressure Airless Sprayer

At present, **high-pressure airless sprayer** is widely used, especially for large parts' steel/metal coating. It is mainly due to the following characteristics:

- As the coating fluid does not include the compressed air, it can eliminate the moisture, oil and other impurities usually generated by the compressed air. It also can avoid loss of material which is caused by compressed air being sprayed onto the surface and put an end to the bubble formation.
- With the high pressure applied on the coating, it can penetrate the pore inside the structure, hence results in good adhesion.
- A high pressure spray generates a thick coating (up to 0.3 mm.), thereby reducing the time of spray. Measured coverage area/spray is up to 300-500 mm with spraying flow rate between 0.5-15 l / min. When used in large-scale construction the spraying rate up to 200-600 square meters/hour is extremely efficient.
- Appropriate for spraying thick-heavy coatings, high solids composition coating and a heavy viscosity coating. It saves the organic solvents, and reduces environmental pollution.
- Makes automatic coating implementable i.e., industrial automation production line and unmanned coating (coating robots).

Applicable Materials:

- High inorganic zinc coating
- Epoxy iron red coatings
- Anti-rust coatings
- Peel able coatings

CY-1300 30:1 COMPACT Airless Sprayer

Built to satisfy the need of low cost sprayers. Designed with a compact size, **COMPACT 30:1 Airless Sprayer** is suitable for high mobility usage. When low cost, easy maintenance and mobility is your main preferences, **COMPACT 30:1 Airless Sprayer** is surely the best thing you can get.

Feature and Benefits

- Low maintenance cost
- Easy maintenance
- Compact volume
- High mobility



CY-0900-10 DPP Air Spray Finishing Package

COSMOSTAR **CY-0900-10** is designed especially for customers who require better coating process. Application of coating regulator and accumulator provide excellent effect in terms of steady output pressure.

Feature and Benefits

- High-quality-finish and low pulsation output deliver a consistent spray pattern
- Easy-to-use, quick color changes and fast material refills save more time and money





MARINE AND SHIPYARD BUILDING

CosmoStar specialized solutions for the marine market include anti-corrosion sprayers and lubrication systems.

Coating

CosmoStar provides **airless sprayers** for spraying protective coatings e.g., Anti fouling coating and anti corrosion coating.

Insulation

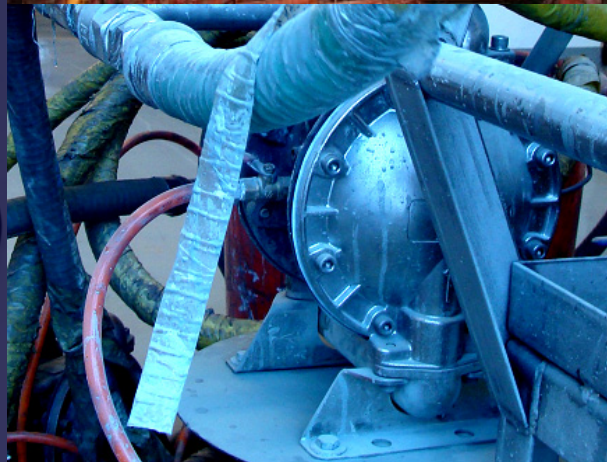
CosmoStar provides **plural component airless sprayers** and injection system for applying polyurethane and resin. Engineered to handle the toughest protective coatings, the Multi-Component Sprayer provides precise ratio control for efficient work.

Painting

CosmoStar **airless sprayers** generate high volume painting with large coverage area and paint flow rate; make the highest painting efficiency possible.

Applicable materials:

Anti-fouling coating, water-based coatings, waterproof coatings, sound-insulation paint, heat preservation, fire-resistant coatings, anti-rust paint, cement mortar, adhesive layer, putty, etc.



Double Diaphragm Pump

CosmoStar double-diaphragm pumps are ideal for corrosive ,abrasive fluid transfer and lubrication. Mainly used for bearing grease to ship propeller shafts and engines.

Features

- ✓ Deliver up to 620 liter/min
- ✓ Lubrication-less operation



Airless Sprayer

CosmoStar **airless sprayers** are designed for heavy duty applications. Huge pressure output makes it suitable for marine and shipyard painting application.

Features

- ✓ Higher pressure ratio for higher flows, superior atomization
- ✓ Wide spraying coverage
- ✓ High mobility





FIXED RATIO PLURAL COMPONENT SPRAYER

HEAVY DUTY PROPORTIONING SYSTEM

Durable, Dependable and built to last

The CosmoStar CY-0610 Plural-Component Sprayer is designed for spraying any high viscosity fluid, high solid content material coating. The gravity feed, flush pump and fluid heater can be implemented to achieve variety functionality equipment to face the hardest environment and any coating application.

Fluid Manifold

The system of dual shutoff and dual drain valve can easily be started or stopped as well as fast process daily ratio-checked.

Precision Ratio

Materials are proportioned by precision positive displacement pumps and mixed accurately.

Mixing Manifold

CosmoStar pneumatic based, explosion proof mix manifold, injector and airless gun ensure a proper mixing ratio for fast-curing materials to be either injected or sprayed.

High Pressure Sprayer

High pressure to handle high viscosity and high solid content coating. Rugged Air Motor body can stand any hardest application environment.

Heating System

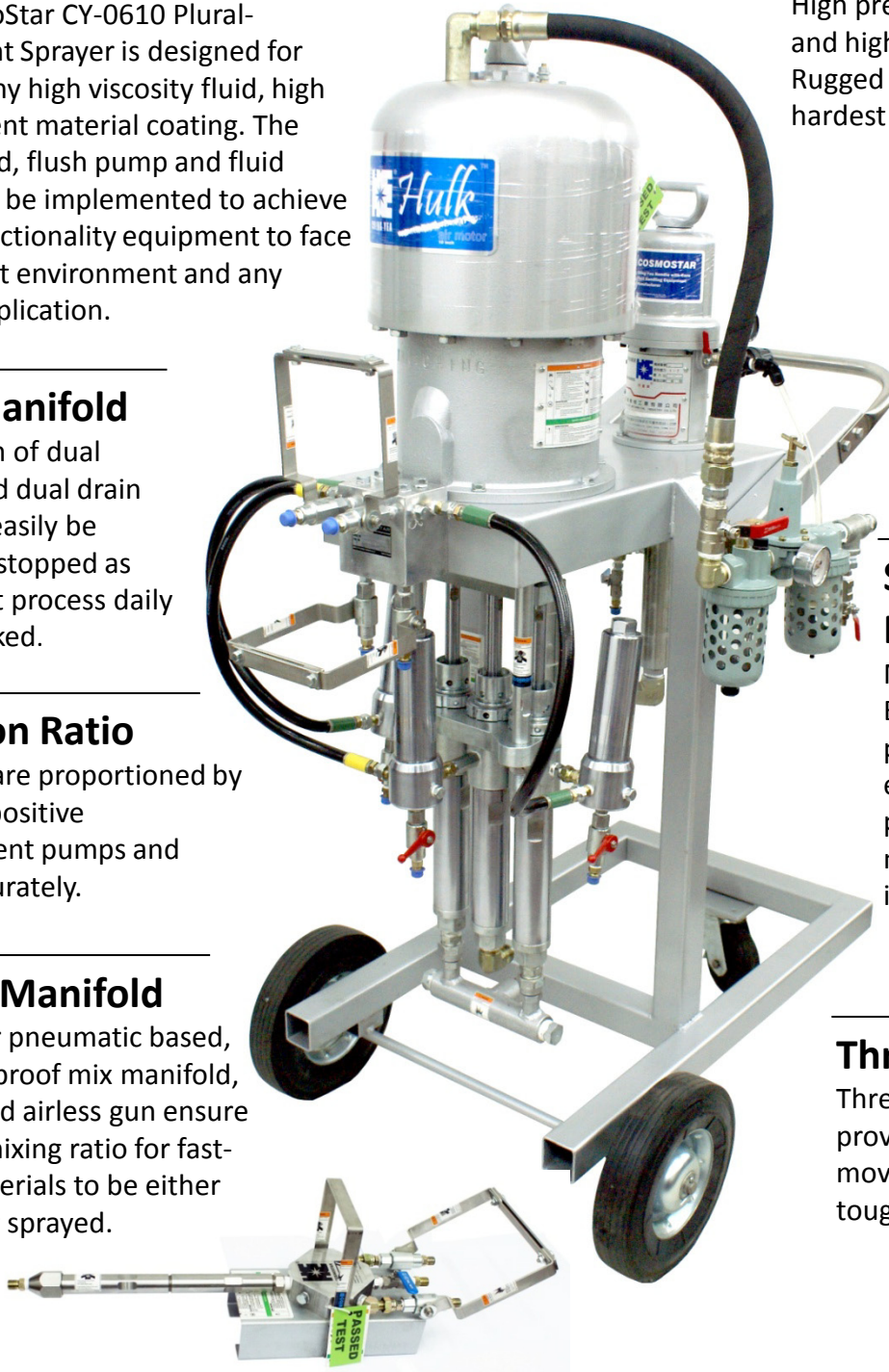
Heating system upgradeable based on your need, which includes fluid heater, heated tank and heated hose.

Solvent Flush Pump

Mounting with CosmoStar 4" Enco high pressure flush pump, it can provide enough pressure force to push materials out of manifold and mixing hose immediately.

Three-wheel Cart

Three-wheel cart design provides the best mobility to move your equipment to any tough location.





CosmoStar-Handle with Care

Experience • Quality • Care

LIQUID RUBBER COATING

CosmoStar provides airless sprayers and pressure tanks for rubber coating industries. Pressurized and agitated liquid rubber coat in the pressure tank is extracted and sprayed by high pressure airless sprayer. The high pressure will guarantee a perfect atomization to make your coating work seamless and efficient.

Liquid rubber is mainly used as coating material. Its impermeable, adhesive and elastic nature make it suitable for waterproofing, repairing and restoring new structures. Moreover, it is also common to use liquid rubber for insulation and sealing. However, the characteristic of liquid rubber especially its viscosity that can reach up to 60000 cps requires special handling techniques. Ching-Yea's airless sprayers and pressure tanks have been widely used to handle rubber coating works and make perfect coating out of this tough material.



CosmoStar COMPACT 30:1 Airless Sprayer is built to satisfy the need of low cost sprayers. Designed with a compact size, **COMPACT 30:1 Airless Sprayer** are suitable for high mobility usage. When low cost, easy maintenance and mobility are your main preferences, **COMPACT 30:1 Airless Sprayer** is surely the best thing out there.

Multi functioned CosmoStar pressure tanks are highly portable and compact. This allows flexible operations in tough environment with limited space. Available in low and high pressure, **CY-057X** comes with 10, 20, 40 and 60 liter models.





CosmoStar-Handle with Care
Experience • Quality • Care

Airless Sprayer Series: PNEUMATIC

High capacity **HULK** air-motor generates up to 73:1 pressure ratio. It also comes with 45:1 and 30:1 capacities.



CosmoStar
Airless Spray Gun

CosmoStar Airless Sprayers offer highly reliable performance even in the harshest environment. The combination of extreme pressure ratio, high flow rate and rugged design make **HULK** 73:1 Airless Sprayers ideal for handling extremely viscous fluids. **COSMOSTAR HULK 73:1** Airless Sprayer is the answer for your heavy-duty spray applications.

includes:

- Switch Tip and Guard
- Contractor Airless Spray Gun
- 3/8 in x 50 ft [9.5 mm x 15 m] Airless Hose
- 1/4 in x 3 ft [6.4 mm x .9 m] Whip Hose

CosmoStar **CY-0116 HULK** Airless Sprayer

TECHNICAL DATA

Air motor diameter	10 in (HULK)
Pressure ratio	73:1
Maximum Fluid Working Pressure	5220 PSI (360 Bar)
Maximum Air Input Pressure	72.5 PSI (5.0 Bar)
Maximum volume flow rates	11.0 LPM
Maximum Recommended Pump Speed	60 CPM
Air inlet size	3/4 npt(f)
Fluid inlet size	1-1/2 npt(f)
Fluid outlet size	1 npt(f)



Airless Sprayer Series: GAS-POWERED

CosmoStar presents Gas-Powered Airless Sprayer series that work under the heaviest environment while maintaining reliable performance, high durability and efficiency. **WALKER** is our answer of the demand of high quality yet mobile spraying machine. The combination of rugged design and high quality Gas Engine provides a reliable system that does the job whenever and wherever perfection is required.

Features and Benefits

- Higher pressure ratio for higher flows
- Longer lines and better atomization
- Wide spraying and coating covered area
- High mobility to work under the harshest environment

CosmoStar
WALKER



Airless Sprayer

- Save paint
- Precise lines
- Eliminate rounded/fuzzy edges
- No extra materials needed

Air Sprayer

- Waste paint
- Uneven lines
- Produce rounded/fuzzy edges
- Extra materials needed to prevent excessive overspray

Typical Applications

- Marine and shipyard
- Off-shore
- Railcars and other transport vehicles
- Chemical and petrochemical plants
- Public works facilities
- Pulp and paper mills
- Nuclear and conventional power
- Facilities
- Pipeline
- Metals and mining

Materials

- Asphalt
- High solids epoxy primers and coatings
- Pulp and paper mills high solids
- Pulp and paper mills polyurethane coatings
- Pulp and paper mills waterborne coatings



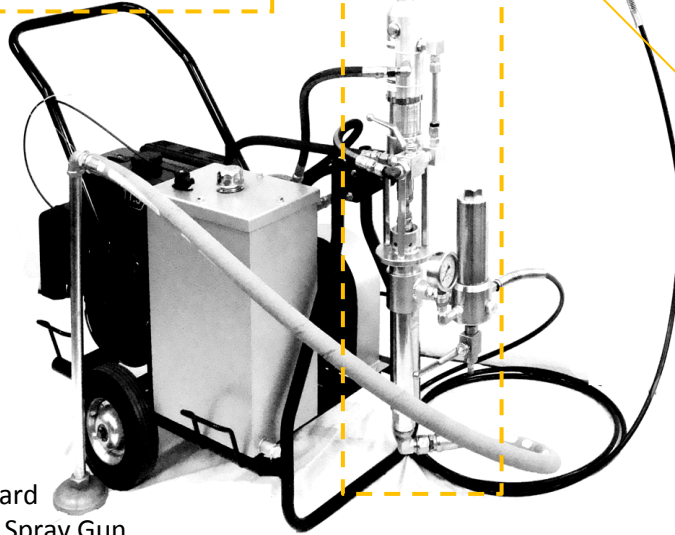
Airless Sprayer Series: GAS-POWERED

High capacity hydraulic pump
Applicable up to giant **230 bar**
working fluid pressure and **11.5**
liters/min flow rate

Ching-Yea's
Airless Spray Gun

includes:

- Switch Tip and Guard
- Contractor Airless Spray Gun
- 3/8 in x 50 ft [9.5 mm x 15 m] Airless Hose
- 1/4 in x 3 ft [6.4 mm x .9 m] Whip Hose



WALKER is the perfect sprayer for the entry-level contractor who craves for maximum power in a compact, lightweight and mobile package

HONDA
ENGINES



HONDA

GX Engine
delivers maximum performance

Features

- Honda OHV commercial-grade engine
- Horizontal shaft
- Electronic ignition/oil alert
- EPA/CARB compliant

Engine (Honda)	Model	Maximum Fluid Pressure	Maximum Volume Flow Rate	Max Tip Size
5.5 HP	CY-1150	230 bar	6.6 LPM	0.48"
11.5 HP	CY-1156	230 bar	11.5 LPM	0.58"

CY-1150 Walker

Engine Power: 5.5HP
Max. flow rate: 6.6 LPM



Choose your pump in two easy steps:

1. Select pressure and flow rate
2. Select power source
 - Air-operated
 - Gas-powered

Compressor Size - Rule of Thumb

- Approximate CFM = **Pump Ratio x GPM**
- Horsepower (Electric Compressor) = **CFM/4**



Airless Sprayer Selection

Airless Sprayer Series: PNEUMATIC

CosmoStar airless sprayers offer highly reliable performance even in the harshest environment. The combination of extreme pressure ratio, high flow rate and rugged design make **HULK** 73:1 Airless Sprayer ideal for handling extreme viscous fluids. COSMOSTAR **HULK** 73:1 Airless Sprayer is the answer for your heavy-duty spray applications.

	Air Motor	Model	Maximum Fluid Pressure	Maximum Volume Flow Rate
73:1	Hulk (10 in)	CY-0116	360 Bar	11.0 LPM
65:1	Hulk (10 in)	CY-0115	360 Bar	12.0 LPM
45:1	Hulk (10 in)	CY-0110	360 Bar	15.0 LPM
30:1	Flash (7 in)	CY-0120	240 Bar	11.5 LPM
30:1	Compact (6 in)	CY-1300	240 Bar	4.0 LPM
23:1	Enco (4 in)	CY-1450	160 Bar	2.0 LPM

CY-0116 Hulk

Pressure Ratio : 73:1
Max. flow rate: 11.0 LPM



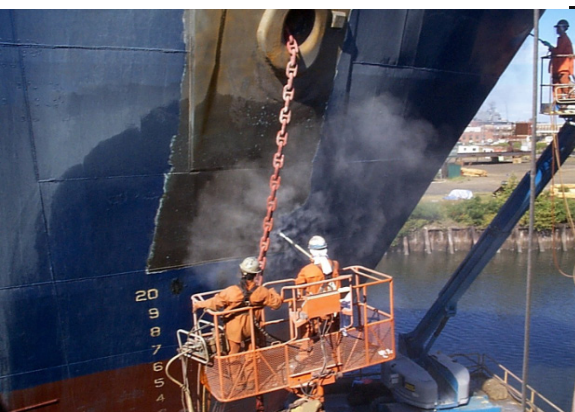
CY-1300 Compact

Pressure Ratio : 30:1
Max. flow rate: 4.0 LPM



CY-1450 Enco

Pressure Ratio : 23:1
Max. flow rate: 2.0 LPM





CosmoStar-Handle with Care
Experience • Quality • Care

Double Diaphragm Pump Sprayer

Ching-Yea provides double diaphragm pump spray set that applies fine finishing on metal and wood surfaces. Ching-Yea provides a more effective system to overcome limitations of the conventional spraying system.

HIGH QUALITY FINISH

Low pulsating system and precision regulator deliver a consistent spray pattern.

EFFICIENT WORK

Steady control of air and material flow ensures minimum overspray thus save money.

ROBUST CONSTRUCTION

Stainless steel and aluminum double-diaphragm pump deliver a wide variety of fluids in the harshest environments.

Spraying stains, sealers, lacquers and top coats for:

- Wooden furniture and Cabinetry
- Timber framing for construction
- Customized lumber application

Ching-Yea Double Diaphragm Pump Finishing Spray Unit

CY-0900-9 High Quality Finish System

High Quality Fine Finish, Quick Color Change and Fast Material Refills
Fluid Regulator, Fluid Filter, Agitator, Tank & Elevated Mount

CY-0900-5 Circulation and Finish Spray System

Compact Circulation with Quality Finish Spray Package
Fluid Regulator, Agitator & Tank

CY-0900 Diaphragm Pump Sprayer

High quality finish spray package for wood and metal applications
Fluid Regulator & Paint Reservoir





CosmoStar-Handle with Care
Experience • Quality • Care

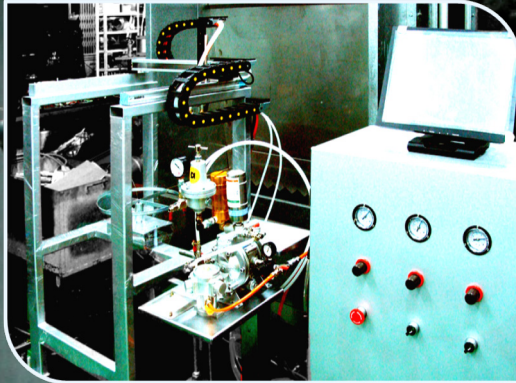
Air Spray Finishing Packages

Customize your own system as you like it.

We understand that different applications requires flexibly-adjustable system.

CosmoStar sprayer comes with high flexibility of settings.

Contact your local distributor and ask for a system that suits you.



Automatic Multi Axis Controllable Sprayer Set :

Ching-Yea's latest development comes with an embedded automatic spraying set. Intended for automatized finishing industry; you can program your own spraying trajectory with user friendly (touch screen) interface. Suitable for conveyor work that requires high uniformity and production rate. Contact us now for more details.

Upgrade your conventional spraying system!

- Superior finishing quality
- Control enhancement and low pulsating system made uniform spraying pattern and less probability of operator error.
- Easy refill saves more time and fully controlled regulator system saves material, thus money.

COSMOSTAR CY-0900-9 is designed especially for customers who require better coating process. Application of coating regulator and accumulator provide excellent effect in terms of steady output pressure.

ISO 9001:2008
Certification



Ching-Yea MECHANICAL INDUSTRY

Fluid Handling Equipment Manufacturer

No.8, Alley 6, Lane 15, Sec. 2, Jiayuan Rd., Shulin District,
New Taipei City 238, TAIWAN



Air Assisted Airless Sprayer



CY-1300AA 30:1 COMPACT Air-assisted Airless Sprayer

COSMOSTAR CY-1300AA 30:1 air-assisted airless sprayer applies air-assisted technology allows our customer to spray with the highest finishing quality, speed and transfer efficiency.

Feature and Benefits

- High quality finish
- Increase productivity
- Reduce paint material cost
- Easy maintenance
- Save time and money

Typical Applications

- Wood furniture
- Cabinetry finishing applications
- High quality finishing process
- General metal finishing applications

Specification

Air Motor Diameter	6 in (COMPACT))
Pressure Ratio	30:1
Maximum Working Pressure	3600PSI (240Bar)
Maximum Air Input Pressure	120PSI (8Bar)
Maximum volume flow rates	4LPM
Air Inlet Size	3/8 or 1/4 npt(f)
Fluid Inlet Size	3/4 npt(f)
High pressure fluid regulator	CY-0925
Maximum Spray Guns	2 guns



CY-0925 High pressure fluid regulator

Applying *air-assisted technology* allows you to spray with the best finishing quality, more speed and higher transfer efficiency.

CY-0925 High Pressure Fluid Regulator



Air Regulator Set

Air hose from different connector is no longer needed as two air regulators can be directly connected to two air-assisted guns.

Dual Air Regulators Set



CY-0927 3/8" High Pressure Filter

Protects and improves the quality of air-assisted system, regulator and spray gun as well as reducing pump pulsation.

High Pressure Filter



Filter

Air Assisted Gun

60, 100, 200



Diaphragm pumps for chemical supply and transfer

COSMOSTAR-CHING YEA

Supply or transfer with ease!

Cosmostar Air-Operated Double Diaphragm pumps are ideal for bulk transfer of your solvent or water-based, low to medium viscosity inks and ingredients. They offer easy maintenance with an extremely reliable patented air valve for true non-sticking operation.

CY-0908 2" DDP

Size: 2 in (50.8mm)
Max. flow rate: 620 LPM



CY-0906 1" DDP

Size: 1 in (25.4 mm)
Max. flow rate: 175 LPM



HE-0300 1" DDP

Size: 1 in (25.4 mm)
Max. flow rate: 133 LPM



Model	CY-0908	CY-0906	HE-0306
Material available	Aluminum	Aluminum	Stainless steel
Typical fluids handle	Chemicals, contaminated surface water, resins, latexes and paints.	Chemicals, contaminated surface water, resins, latexes and paints.	Chemicals, contaminated surface water, adhesives, Varnishes and stains, Resins and primers, inks

CY-0903 3/4" DDP

Size: 3/4 in
Max. flow rate: 120 LPM



CY-0902 3/8" DDP

Size: 3/8 in (9.5mm)
Max. flow rate: 23 LPM



HE-0302 3/8" DDP

Size: 3/8 in (9.5mm)
Max. flow rate: 23 LPM



Model	CY-0908	CY-0907	CY-0906 & HE-0306
Material available	Aluminum	Aluminum & stainless steel	Aluminum & stainless steel
Typical fluids handle	Chemicals, contaminated surface water, resins, latexes and paints.	Chemicals, contaminated surface water, resins, latexes and paints.	Chemicals, contaminated surface water, adhesives, Varnishes and stains, Resins and primers, inks

Pneumatic Transfer Pumps



Pumping your highest volumes and viscosities!

With higher pump pressures and flow rates, CosmoStar priming piston pumps handle a broad range of inks with ease. They offer durability, power and reliability in any ink manufacturing or printing application.

Pressure Ratio	Air Motor	Model	Air Inlet Pressure	Max. Operation Pressure	Max. Volume Flow Rate
20:1	Hulk (10 in)	CY-0168	8 BAR (116 PSI)	160 BAR (2320 PSI)	46 LPM
10:1	Hulk (10 in)	CY-0169	8 BAR (116 PSI)	80 BAR (1160 PSI)	60 LPM
12:1	Flash (7 in)	CY-0164	8 BAR (116 PSI)	96 BAR (1392 PSI)	40 LPM
10:1	Flash (7 in)	CY-0165	8 BAR (116 PSI)	80 BAR (1160 PSI)	46 LPM
5:1	Flash (7 in)	CY-0166	8 BAR (116 PSI)	40 BAR (580 PSI)	60 LPM

Compact 6 in/ Enco 4 in Air Motor Pneumatic Transfer pumps

Compact 6 in/ Enco 4 in

Typical Fluids Handled:

- Solvent borne and waterborne fluids
- Resins
- Cleaning fluids
- High solid coatings
- High solids, plural component coatings
- Stains, lacquers and varnishes
- Acid-catalyzed materials



Pressure Ratio	Air Motor	Model	Air Inlet Pressure	Max. Operation Pressure	Max. Volume Flow Rate
30:1	Compact (6 in)	CY-1300-A	8 BAR (116 PSI)	240 BAR (3480 PSI)	4 LPM (1 GPM)
23:1	Enco (4 in)	CY-1450-A	8 BAR (116 PSI)	184 BAR (2668 PSI)	2 LPM (0.5 GPM)
10:1	Compact (6 in)	CY-1312	8 BAR (116 PSI)	80 BAR (1160 PSI)	10LPM (2.6 GPM)
7:1	Compact (6 in)	CY-1315	8 BAR (116 PSI)	56 BAR (812 PSI)	18 LPM (4.7 GPM)
5:1	Enco (4 in)	CY-1302	8 BAR (116 PSI)	40 BAR (580 PSI)	10 LPM (2.6 GPM)
5:1	Compact (6 in)	CY-0185	8 BAR (116 PSI)	40 BAR (580 PSI)	28 LPM (7.4 GPM)
3:1	Compact (6 in)	CY-0182	8 BAR (116 PSI)	24 BAR (348 PSI)	38 LPM (10 GPM)



CosmoStar-Handle with Care

Experience • Quality • Care

About COSMOSTAR

EXPERIENCE • QUALITY • CARE

Established in 1980, Ching-Yea has been a front runner among fluid handling equipments manufacturers in Taiwan. The key to our long success is exceptional experience, technical excellence and dependable customer service. Having obtained EN-ISO 9001:2008 certification, we maintain our high quality control through world class management.

Our products cover various areas of fluid handling applications including spray finishing, fluid agitating, sealant, lubrication, adhesives and large scale power application equipment for the contractor industry.

Sales/ Distribution/ Service

ASIA HEADQUARTER

Ching-Yea MECHANICAL INDUSTRY CO.,LTD.
No.8, Alley 6, Lane 15, Sec. 2, Jiayuan Rd.,
Shulin District, New Taipei City 238, TAIWAN
Tel: +886-2-28867799
Fax: +886-2-28868991
email: sales@chingyea.com
website: cosmo-star.net

EUROPE HEADQUARTER

TBH POLSKA SP. Z O.O.
ul. Bukowska 14, 62-080 Sieroslaw, Poland
Tel: +48 61 8963 615
Fax: +48 61 8963 900
email: sales@cosmo-star.com
website: cosmo-star.com

THAILAND

V-SPRAYS CO., LTD
5/43 Srinakarin 46/1 (Pramote) Nongbon,
Pravate, Bangkok 10250 Thailand
Tel: +62-2-1383788-9
Fax: +62-2-1383790

FRANCE

DOSEUROPE
16 RUE AMPERE IMMEUBLE
SOMAG 95300 PONTOISE FRANCE
TEL: +33 1 30 30 60 60

PERU

GLOBAL FINISHING SOLUTIONS SAC
Calle Montecarlo 253 Dpto 101 Chacarilla
del Estanque
Surco. Lima – Peru
Tel.: +51 1 7227715
Cel: +51 1 986632733

INDONESIA

PT. NORITA FLEXINDO - Jakarta
Jl. Puri Cileungsi No. 18 Desa Gandoang,
Kabupaten Bogor, Jawa Barat *Indonesia*
16820
Tel. +62 21 8234260
Fax. +62 21 82492235

CV. WARNA ABADI PRATAMA - Surabaya
Jl. Darmo Baru Barat 32
Surabaya, Jawa Timur 60189 *Indonesia*
Tel: +62-31-7346178
Fax: +62-31-7990139

PHILIPPINES

MEGATECH FILFOR CORP.
Sta. Maria Drive cor. Sta. Teresita Drive,
Sta. Maria Industrial Subd.
Bagumbayan, Taguig City , Metro
Manila Philippines
Tel: +63-2-8387587
Fax: +63-2-8387587

PORTUGAL

MAQUISPRAVY, Lda.
Rua Principal, nº9 | Apartado 78
A-do-Barbas
Tel: +351 244-775-171
Fax: +351 244-778-464

SOUTH AFRICA

BLASTRITE [Pty] LTD
16 th Floor No 2 Long Street Cape
Town South Africa
Tel: +2721 417 1700
Fax: +2721 425 2486

How to contact us

Call us today for product information
or demonstration inquiry or visit us at www.cosmo-star.net

Ching-Yea is registered to EN-ISO 9001:2008